

HiveManager 6.8r2 Release Notes

Release Date: May 10, 2016

Release Versions: HiveManager 6.8r2

Platforms supported: AP110/120, AP121/141, AP130, AP230, AP250, AP330/350, AP370/AP390, AP1130, BR100, BR200, BR200-WP, BR200-LTE-VZ, SR2024P, SR2124P, SR2048P, VPN Gateway Virtual Appliance

These are the release notes for HiveManager 6.8r2 software. Known issues are described in ["Known Issues"](#) on page 3 and ["Addressed Issues"](#) on page 4.

ⓘ HiveManager 6.8r2 can manage the AP250 running HiveOS 7.0r1.

Features and Enhancements

This release adds the following new features to all supported platforms.

LED Behavior: HiveManager 6.8r2 provides additional status LED configuration flexibility on devices running HiveOS 6.5r4 or later.

Upgrading HiveManager Software

Aerohive supports upgrading to the 6.8r2 HiveManager software from HiveManager 5.1r2 releases or later. If your system is running an image earlier than 5.1r2, follow the steps in the 5.1r2 Aerohive release notes to upgrade HiveManager to 5.1r2 before upgrading your system to 6.8r2.

Upgrade HiveManager 5.1r2 or later to 6.8r2

Use the following procedure to upgrade a HiveManager standalone or HA pair.

From	Action	To
HiveManager 5.1r2 or later	Upgrade to HiveManager 6.8r2.	HiveManager 6.8r2

Upgrading the HiveManager Appliance

1	Back up your database as a safety precaution. Navigate to Home > Administration > HiveManager Operations > Back Up Database .
2	Save the 6.8r2 HiveManager software file to a directory on your management system or SCP server. (Log in and download the 6.8r2 HiveManager software file from the Aerohive Support page.)
3	Log in to HiveManager running 5.1r2 or later and then upload the 6.8r2 HiveManager software file. To update HiveManager, click Home > HiveManager Operations > Update Software , select the method to upload the HiveManager software, and then click OK . When the upload is complete, HiveManager automatically reboots to activate its new software.

Upgrading the HiveManager Appliance

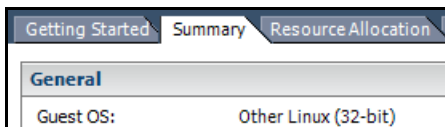
- 4 HiveManager periodically checks for new HiveOS firmware releases that it can download to itself for distribution to managed devices. If HiveManager is connected to the Internet, it automatically obtains HiveOS firmware image files for every type of managed device from the Aerohive update server and HiveManager makes the image files available in about 15-30 minutes, depending on how many image files it is downloading and its connection speed to the server.
- To update the HiveOS firmware image files manually, log back in to HiveManager, select the device or devices of the same type for which you want to update the HiveOS firmware, click **Update > Advanced > Upload and Activate HiveOS Firmware**, select the appropriate HiveOS image from the list for the selected device type, and then click **Upload**. If the firmware is not available in the list of HiveOS images, click **Add/Remove** and obtain the HiveOS image you want from the update server, your local directory, or SCP server. If you are managing various Aerohive device types, repeat the upload process for all your managed devices, and then reboot them to activate their new firmware.

Increasing Memory, CPU, and VM Param Settings for the HiveManager Virtual Appliance

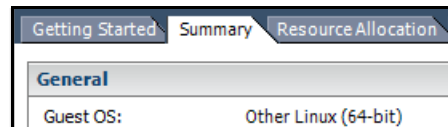
Before you can upgrade a 32-bit HiveManager Virtual Appliance to 6.0 or later, you must increase the memory for it within the ESXi hypervisor to 3 gigabytes, set the number of virtual sockets for its CPU to 2, and change VM params to 1024 megabytes.

(((i))) Upgrading the 64-bit HiveManager Virtual Appliance to 6.0 or later does not require any changes to its default memory (4 GB), CPU (4 virtual sockets), and VM param settings (1480 MB). A new 6.8r2 installation of a 64-bit HiveManager Virtual Appliance .ova file has a new default memory size of 8 GB.

1. From the vSphere Client on your management system, log in to the ESXi hypervisor hosting the HiveManager Virtual Appliance whose memory you want to increase.
2. To check which type of system you have, select the name of the HiveManager Virtual Appliance, click **Summary**, and check whether the Guest OS indicates that it is 32 or 64 bits.



32-bit HiveManager Virtual Appliance



64-bit HiveManager Virtual Appliance

3. If it is a 32-bit system, keep the name of the HiveManager Virtual Appliance selected, click the **Console** tab, click in the console window, and then log in to the HiveManager CLI shell. If it is a 64-bit system and is still using the default settings, you are not required to change them. However, if you want to, you can increase the memory from 4 GB to 8 GB by performing the following steps.

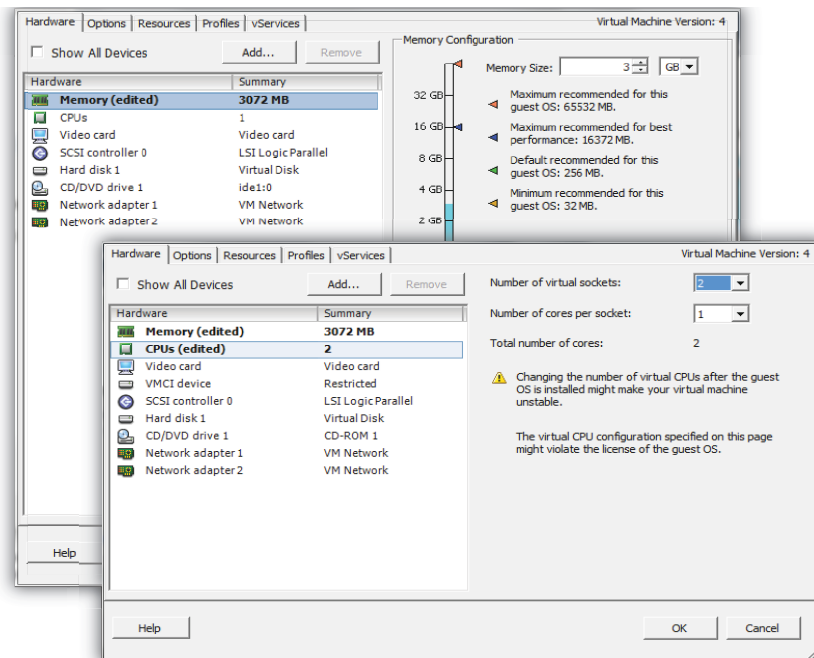
```

1) Network Settings and Tools
2) Display System Information
3) Advanced Product Configuration
4) Reboot Appliance
5) Shut down the System
6) Change CLI Shell Password
7) Logout of shell
Please make a choice:

```

4. To shut down the virtual appliance, enter **5** (Shut down the system) and then enter **Y** when prompted to confirm the action.

5. In the vSphere Client GUI, right-click the HiveManager Virtual Appliance name in the left navigation panel, and then click **Edit Settings**.
6. On the *Hardware* tab, click **Memory**, change the value in the Memory Size field to **3 GB** for a 32-bit system or up to **8 GB** for a 64-bit system, and then click **OK**. (For a 64-bit system using its default values, there is no need to change any other settings.)
7. For a 32-bit system, select **CPUs** from the Number of virtual sockets drop-down list, select **2**, and then click **OK**.



8. With the name of the HiveManager Virtual Appliance still selected, click **Power on the virtual machine**.
9. After the HiveManager Virtual Appliance is powered back on, click the **Console** tab, click in the console window, and log in to the HiveManager CLI shell.
10. Enter **3 - 2 - 2** to navigate to **Advanced Product Configuration > Configure VM Params > Change VM Params**, and then enter **1024** (for 1 GB).
11. Reboot the HiveManager Virtual Appliance to apply this setting. (You can navigate back to the home menu, and enter **4** for Reboot Appliance.)
12. After the HiveManager Virtual Appliance finishes rebooting, check that it recognizes its increased memory size by returning to the console window, logging back in to the HiveManager CLI shell, and entering **2 - 4** (Display System Information > Display Hardware Information). To complete the memory upgrade procedure, check that the MemTotal value for a 32-bit system is approximately 3,000,000 KB. (The MemTotal value for a 64-bit system is approximately 8,000,000 KB.)

Known Issues

No major known issues were found in HiveManager 6.8r2.

Addressed Issues

The following issues were addressed in the current and previous HiveManager releases.

Addressed Issues in HiveManager 6.8r2

CFD-1793	When viewing the Presence Analytics page in HiveManager, only the first 50 devices were reported.
CFD-1792	An empty instance of major alerts were logged when major events occurred, regardless of whether major alerts were configured to be logged; however, when major alerts were configured to be logged, the empty alert was accompanied by the fully formed alert.
CFD-1767	HiveManager would return an empty report when a region or building was chosen instead of a specific floor was used to filter results.
CFD-1758	Client reports could not be generated for some short time periods, but were generated properly for longer time periods.

Addressed Issues in HiveManager 6.8r1

CFD-1574	The letters ä, ö, ü, and ß are not rendered properly in the localized German captive web portal acceptance policy text.
CFD-1535	HiveManager Online does not display historical client association data correctly if the requested time range exceeds three days.
CFD-1362	Some of the aggregated total values did not accurately reflect the arithmetic totals of the component values in the dashboard.
CFD-1128	HiveManager sometimes calculates the number of selected devices incorrectly when a filter is used and there are more devices selected than the page can display.