

HiveManager 6.8r4 Release Notes

Release Date: September 09, 2016

Release Versions: HiveManager 6.8r4

Platforms supported: AP110/120, AP121/141, AP130, AP170, AP230, AP250, AP245X, AP320/AP340, AP330/AP350, AP370/AP390, AP1130, BR100, BR200, BR200-WP, BR200-LTE-VZ, SR2024P, SR2124P, SR2048P, VPN Gateway Virtual Appliance.

Features and Enhancements

This release adds support for the following features and enhancements:

- Added support for HiveOS 6.5r5
- Added a new AH_SYSTEM_MIB, and updated all MIBs with the correct Aerohive contact info and address

Upgrading HiveManager Software

Aerohive supports upgrading to the 6.8r4 HiveManager software from HiveManager 5.1r2 releases or later. If your system is running an image earlier than 5.1r2, follow the steps in the 5.1r2 Aerohive release notes to upgrade HiveManager to 5.1r2 before upgrading your system to 6.8r4.

Upgrade HiveManager 5.1r2 or later to 6.8r4

Use the following procedure to upgrade a HiveManager standalone or HA pair.

From	Action	To
HiveManager 5.1r2 or later	Upgrade to HiveManager 6.8r4.	HiveManager 6.8r4
HiveOS 5.1r2 or later	Use HiveManager running HiveManager 6.8r4 to manually upgrade managed devices to HiveOS 6.5r5.	HiveOS 6.5r5

Upgrading the HiveManager Appliance

1	Back up your database as a safety precaution. Navigate to Home > Administration > HiveManager Operations > Back Up Database .
2	Save the 6.8r4 HiveManager software file to a directory on your management system or SCP server. (Log in and download the 6.8r4 HiveManager software file from the Aerohive Support page.)
3	Log in to HiveManager running 5.1r2 or later and then upload the 6.8r4 HiveManager software file. To update HiveManager, click Home > HiveManager Operations > Update Software , select the method to upload the HiveManager software, and then click OK . When the upload is complete, HiveManager automatically reboots to activate its new software.

Upgrading the HiveManager Appliance

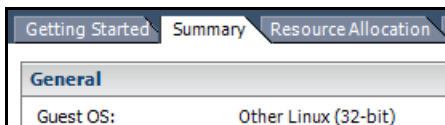
- 4 HiveManager periodically checks for new HiveOS firmware releases that it can download to itself for distribution to managed devices. If HiveManager is connected to the Internet, it automatically obtains HiveOS firmware image files for every type of managed device from the Aerohive update server and HiveManager makes the image files available in about 15-30 minutes, depending on how many image files it is downloading and its connection speed to the server.
- To update the HiveOS firmware image files manually, log back in to HiveManager, select the device or devices of the same type for which you want to update the HiveOS firmware, click **Update > Advanced > Upload and Activate HiveOS Firmware**, select the appropriate HiveOS image from the list for the selected device type, and then click **Upload**. If the firmware is not available in the list of HiveOS images, click **Add/Remove** and obtain the HiveOS image you want from the update server, your local directory, or SCP server. If you are managing various Aerohive device types, repeat the upload process for all your managed devices, and then reboot them to activate their new firmware.

Increasing Memory, CPU, and VM Param Settings for the HiveManager Virtual Appliance

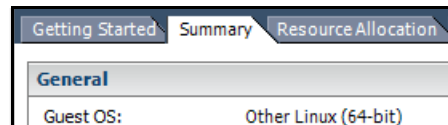
Before you can upgrade a 32-bit HiveManager Virtual Appliance to 6.0 or later, you must increase the memory for it within the ESXi hypervisor to 3 gigabytes, set the number of virtual sockets for its CPU to 2, and change VM parameters to 1024 megabytes.

(((i))) Upgrading the 64-bit HiveManager Virtual Appliance to 6.0 or later does not require any changes to its default memory (4 GB), CPU (4 virtual sockets), and VM param settings (1480 MB). A new 6.8r4 installation of a 64-bit HiveManager Virtual Appliance .ova file has a new default memory size of 8 GB.

1. From the vSphere Client on your management system, log in to the ESXi hypervisor hosting the HiveManager Virtual Appliance whose memory you want to increase.
2. To check which type of system you have, select the name of the HiveManager Virtual Appliance, click **Summary**, and check whether the Guest OS indicates that it is 32 or 64 bits.



32-bit HiveManager Virtual Appliance



64-bit HiveManager Virtual Appliance

3. If it is a 32-bit system, keep the name of the HiveManager Virtual Appliance selected, click the **Console** tab, click in the console window, and then log in to the HiveManager CLI shell. If it is a 64-bit system and is still using the default settings, you are not required to change them. However, if you want to, you can increase the memory from 4 GB to 8 GB by performing the following steps.

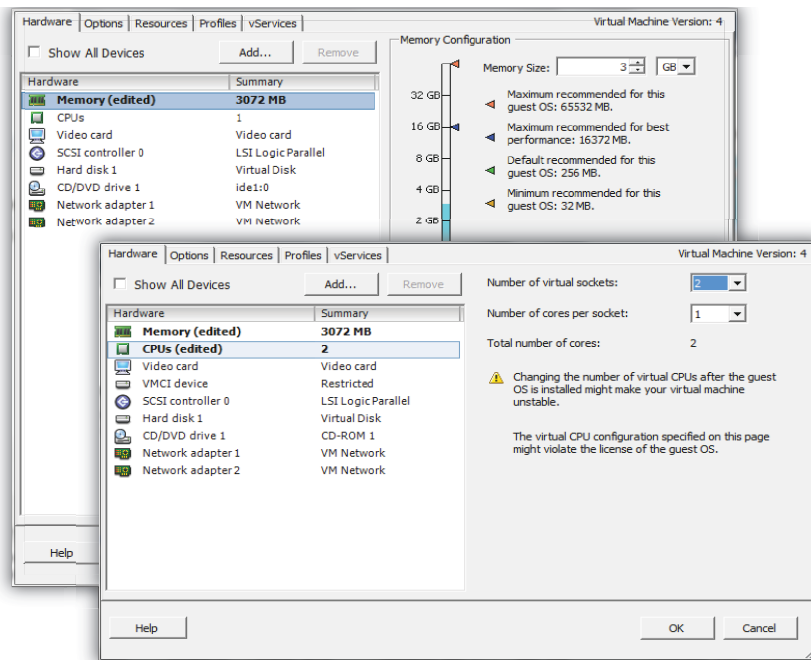
```

1) Network Settings and Tools
2) Display System Information
3) Advanced Product Configuration
4) Reboot Appliance
5) Shut down the System
6) Change CLI Shell Password
7) Logout of shell
Please make a choice:

```

4. To shut down the virtual appliance, enter **5** (Shut down the system) and then enter **Y** when prompted to confirm the action.

5. In the vSphere Client GUI, right-click the HiveManager Virtual Appliance name in the left navigation panel, and then click **Edit Settings**.
6. On the *Hardware* tab, click **Memory**, change the value in the Memory Size field to **3 GB** for a 32-bit system or up to **8 GB** for a 64-bit system, and then click **OK**. (For a 64-bit system using its default values, there is no need to change any other settings.)
7. For a 32-bit system, select **CPUs** from the Number of virtual sockets drop-down list, select **2**, and then click **OK**.



8. With the name of the HiveManager Virtual Appliance still selected, click **Power on the virtual machine**.
9. After the HiveManager Virtual Appliance is powered back on, click the **Console** tab, click in the console window, and log in to the HiveManager CLI shell.
10. Enter **3 - 2 - 2** to navigate to **Advanced Product Configuration > Configure VM Params > Change VM Params**, and then enter **1024** (for 1 GB).
11. Reboot the HiveManager Virtual Appliance to apply this setting. (You can navigate back to the home menu, and enter **4** for Reboot Appliance.)
12. After the HiveManager Virtual Appliance finishes rebooting, check that it recognizes its increased memory size by returning to the console window, logging back in to the HiveManager CLI shell, and entering **2 - 4** (Display System Information > Display Hardware Information). To complete the memory upgrade procedure, check that the MemTotal value for a 32-bit system is approximately 3,000,000 KB. (The MemTotal value for a 64-bit system is approximately 8,000,000 KB.)

Documentation

Product documentation is still in progress at the time of these releases and is not yet available. However, the Help for HiveOS CLI commands is ready. To use the CLI Help, enter `keyword-SPACE-?` (for example: `gos ?`). In addition, there are online CLI reference guides that provide the syntax and explanations for every command in the CLI. They also include information on accessing the CLI through console, Telnet, and SSH connections, tips on using the CLI, and some keyboard shortcuts.

Help System for Mobile Devices

Aerohive provides a way for you to view the Help system on a mobile device. The Aerohive Help is designed to be responsive, so in cases where viewing the Help system in a browser is inconvenient or impossible, you can view the Help content on your smart phone or tablet.

Known Issues in HiveManager 6.8r4

There are no known issues in HiveManager 6.8r4

Addressed Issues

The following issues were addressed in the current and previous HiveManager releases.

Addressed Issues in HiveManager 6.8r4

CFD-1988	Customers experienced high CPU usage levels after upgrading from 6.8r2 to 6.8r3.
CFD-1984	When a social login SSID was configured, messages in the configuration audit were not displayed correctly.
CFD-1979	The configuration audit message for the LED power-saving mode was inconsistent.
CFD-1932	The VHM was not accessible and there were configuration errors after upgrading a HiveManager Virtual Appliance from 6.6r3 to 6.8r2.
CFD-1922	The customer received an error message when attempting to add presence analytics APs to a retail location.
CFD-1128	HiveManager displayed an incorrect number of selected APs when using filters.
HMGR-1311	SSHv2Hello has been deprecated due to security concerns.

Addressed Issues in HiveManager 6.8r2a

CFD-1844	When uploading a configuration containing changes to the LED behavior, HiveManager 6.8r2 returned a message indicating an XML problem.
----------	--

Addressed Issues in HiveManager 6.8r2

CFD-1792	An empty instance of major alerts were logged when major events occurred, regardless of whether major alerts were configured to be logged; however, when major alerts were configured to be logged, the empty alert was accompanied by the fully formed alert.
CFD-1767	HiveManager would return an empty report when a region or building was chosen instead of a specific floor to filter results.
CFD-1758	Client reports could not be generated for some short time periods, but were generated properly for longer time periods.

Addressed Issues in HiveManager 6.8r1

CFD-1574	The letters ä, ö, ü, and ß were not rendered properly in the localized German captive web portal acceptance policy text.
CFD-1535	HiveManager Online did not display historical client association data correctly if the requested time range exceeded three days.
CFD-1362	Some of the aggregated total values did not accurately reflect the arithmetic totals of the component values in the dashboard.
CFD-1128	HiveManager sometimes calculated the number of selected devices incorrectly when a filter was used and there were more devices selected than the page could display.

2016 ©Aerohive Networks, Inc.
Aerohive is a U.S. registered trademark of Aerohive Networks, Inc.